

Battery powered X-RAY GENERATOR CP160B

CONSTANT POTENTIAL ULTRALIGHTWEIGHT BATTERY POWERED X-RAY GENERATOR FOR NDT and SECURITY INSPECTIONS

- NDT inspection
- Bomb detection
- Drug search
- Customs control



CP160B: Side view and Fibres reinforced plastic transport case

- ➔ Constant potential output 160 kV- 0.5 mA
- ➔ 60° x 40° directional beam - 0.4mm x 1mm focal spot
- ➔ 7 kg complete with battery pack and handling feature
- ➔ Extended operation, external power supply options
- ➔ Optimized for new digital and radiographic imaging media

Advanced Technology

Over recent years, there have been major advances in imaging technology: CMOS silicon active pixel sensors, CCD capture devices and high speed film-based systems (such as F8 + RCF screens). Combine these with the ultra lightweight, mains power-independent CP160B as the source of X-rays and the result is a totally new concept for NDT and SECURITY applications.

Greater penetrating power and almost incredibly low and compact size are achieved by the advanced 100 kHz resonant mode high voltage transformer. This delivers a constant DC output that easily outperforms contemporary 200 kV cold cathodes pulsed X-ray generators. Depending on the detector used, CP160B will image through steel plates up to 21 mm thick with a very short exposure time.

The CP160B can also be run continuously for several minutes without cooling interruptions, a major improvement on the "few seconds" possible with pulsed, cold cathode X-ray units.

A handling fixture that makes all the difference...

Careful attention has also been given to help make working on site faster, more accurate and easier. The strong, shock absorbing and visually appealing handling fixture anticipates users' needs.

Wide choice of power supply sources...

- Standard interchangeable battery pack
- Optional external battery module (car battery 12/36 DC/DC converter).

Remote operation ...

Cable or external driven operation is simply achieved through the front panel connector. Thanks to the serial port RS232, kV, mA, exposure time and pre-warning time can be changed at distance with a standard text terminal.

The communication accepts text commands based on the echo mode protocol

Specifications for security

Voltage output type	Constant Potential
Voltage output	60 to 160 kV
Current output	0.5 mA
Max. anode dissipation	80 watts
Focal spot	0.4 x 1 mm
Useful angle beam	60°x40°
Inherent filtration	equiv. 3.5 mm Al
Max. steel penetration	21 mm steel
Max. continuous exposure Time	99 s
Internal Power supply	36 Vdc Ni-Cad
Working Time till low battery	>8 min. at 20°C
Number of shots at full charge	>100 shots
Weight	7 kg
Tube head size	dia. 124 x 490 mm

Control & settings

Optimized warm-up shot
Overheating protection
X-ray ON flashing light
Power ON/OFF key switch
START/STOP buttons
Pre-warning time adjustable from 0 to 99 sec.
10 A fuse
Connector for remote operation
Time, kV, mA, pre-warning settings
Temperature, kV, mA, time displayed

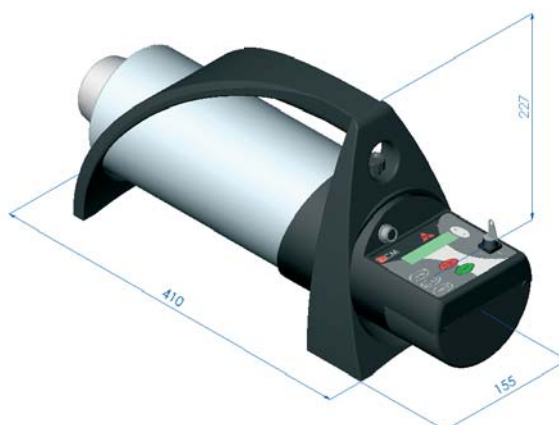
Standard Accessories

Fibres reinforced ABS Carrying case
Fast battery charger (60 min)

Optional accessories

Visual and audible warning + safety interlock key
Spare battery pack
Car battery power module (12/36 DC/DC converter)
Trigger cable
Tripod and frame

CP160B dimensions



Zoning Les Plenesses
Rue Leon Crosset
B-4840 Welkenraedt
Belgium
Tel. +32 (0)87/44.01.50
Fax: +32 (0)87/44.01.60
E-mail: sales@icm.be
www.icm.be