

Technical specifications:

General	Resolution: 800µm, 512 pixels Penetration: >25mm of Steel (with CP120)	Power Requirement	Supply: Self-contained rechargeable cells Battery Life, image capture: >80 images on one charge
X-Ray Detector	Type: Linear PIN diode array Detector resolution: 800µm, 512 pixels Dynamic range: 4096 (12-bit) Scanning area: 557 mm x 400 mm Line scan speed: 6 m/min to 0.5 m/min	Physical (Detector)	Detector dimensions: 720 x 623 x 50 mm (external dimensions only) Weight: Less than 8 Kg Enclosure: Single handle, allowing one handed carry with gloved hand
Imaging Station	Type: Ruggedised Notebook	Environmental	Operating temperature: 0 to +40 °C Survival temperature: -40°C to +80°C Relative humidity: 5 to 95% non-condensing
Communications	Wireless: 802.11g		
Options	Resolution: 200µm (2048 pixels), 400µm (1024 pixels) Source: 160kV 0.5mA Wireless Repeaters: Increased range or non line-of-sight operation Wireless operation: No cable connections Imaging Station: Toughbook™ Charging Station: Single charging station for all battery packs Mounting Options: Tripod and rough terrain mounts Carrying Cases: Range of ruggedised carrying cases for detector, source and notebook Materials ID: Materials Identification discriminates between organic and inorganic materials		

	Cp120	Cp160
X-ray generator	Wave form: Constant potential	Constant potential
	X-ray dose 1 ft: 1000 µSv/s	4000µSv/s
	Max. capacity / 1 batt.: 5-6 min cont. X-ray generation (Up to 120 images with 3 seconds exposition)	5-6 min cont. X-ray generation
	Maximum kV: 120 kV (kV adj.: 40 to 120kV)	160kV (kV adj.: 60 to 160kV)
	Maximum mA: 1.5mA between 40 and 80kV 1mA between 81kV and 120kV (mA adj.: 0.1 to 1.5mA)	0.5mA
	Exposure time: adjustable from 1s to 99s	adjustable from 1s to 99s
	Pre-warning time: adjustable from 0s to 99s	adjustable from 0s to 99s
	Typical penetration: 30mm / 1.181 inch of steel	40mm / 1.574 inch of steel
	Guaranteed penetration: 25mm / 0.984 inch of steel	35mm / 1.377 inch of steel
	(Distance between x-ray source and image capt. Unit: 15cm / 5.9in)	
	Focal spot size: 0,25x0,50mm/0.0098x0.0197in	0,20x0,40mm/0.0079x0.0157in
	Tube life: Unlimited	Unlimited
	2 batteries (1 spare): 36V 600mAh NiCd	36V 600mAh NiCd
	Weight: 6,5kg / 14.3lbs	7kg / 15.4lbs
	Beam angle: 60°x52°	60°x40°

Fast battery charger 1 h charge

Carrying cases 620 x 320 x 490 mm / 24.2 x 12.5 x 19.1 in and 805 x 725 x 185 mm / 31.4 x 28.3 x 7.2 in

Contact details :

Industrial Control Machine S.A. (ICM)
Rue Léon Crosset, 51 ZI Les Plenesses
B-4840 WELKENRAEDT
BELGIUM

Tel. : +32 87 440 150
Fax : +32 87 440 160
E-mail : sales@icm.be
www.icm.be

Your local distributor is :

XSPEC TECHNOLOGY SDN BHD
No. 8, Jalan Industri USJ 1/8, Taman Perindustrian USJ 1,
47600 Subang Jaya, Selangor, MALAYSIA
Telp: +60 3 80231161 Fax: +60 3 80231167
HP: +60 12 9888086
Email: inquiry@xspect.com.my

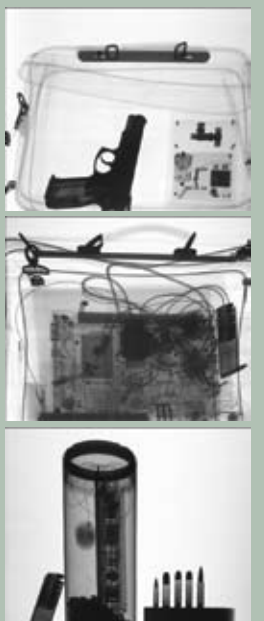
FlatScan 27 X-SPECTOR

- Explosive Ordonance Disposal
- Customs, Police
- Counter Surveillance
- Non Destructive Testing

Battery powered constant potential x-ray generator

KV & mA ouputs selectable from the laptop

Progressive penetration depth study





FlatScan 27 System

FlatScan 27 is a very innovative flat portable battery powered X-ray photo-diodes system designed for high-speed and high-resolution inspection tasks. The FlatScan 27 incorporates a state-of-the-art 2D (two dimensional) self-contained robust scanning detector, a Laptop computer and a CP120 or CP160 portable constant potential X-ray generator for real time image processing. The FlatScan 27 is deployed very easily and quickly in the field for:

- * The EOD evaluations of suspicious packages located in public areas (e.g. bombs, arms ...)
- * Mobile customs searches (weapons and all illegal substances ...)
- * Oversized objects that cannot be scanned in conventional X-Ray machines for airport and customs applications
- * Industrial Non destructive testing of complex assemblies (e.g. welds ...)

=> Principally of interest to military, police, prisons, customs applications, Quality control & NDT Managers.



FlatScan 27 Detector

Incorporating a large number of unique technological features the FlatScan 27 provides a versatile and a very thin detector (thickness of 52mm), which enables objects to be scanned even if they are located in very tight places (e.g. close to a wall...). As well, the FlatScan 27 provides an impressive image quality with a high penetration capability (up to 30 mm of steel at 120kV, 1mA), thanks to its sensitivity, to the 800 microns resolution (200 microns detector optional!), and to the possibility to slow down the speed of the scanning detector.



The CP120 & CP160 x-ray generators

The CP120 & the CP160 are the most advanced battery powered portable X-ray generators available on the market. Powered by a 36Vdc battery, its constant potential output produces a stable, penetrating and contrast-rich beam. The mini focal spot makes up to 5 times magnification possible without loss of image sharpness.

Because the kV and mA of the Constant Potential series can be regulated, the right quality of X-rays and the correct dose can be selected to suit each, individual suspect item. The wide beam angle allows the generator to be placed very close to the image capture unit, thereby increasing the effective penetration capability of the system as a whole.



CP120

CP160

Software

The operator can select all the standard following processing operations: reverse black & white, pseudo colour, zoom, an extraordinary contrast stretch mode and most usefully, the possibility to change all parameters of the CP120 & CP160 for progressive depth penetration studies.

Dual Energy

Additionally, thanks to the very specific design of the detector and of the CP120 & CP160, the optional Materials ID software provides dual energy images in order to highlight on the laptop's screen organic (e.g. explosives and drugs) and non organic (metals) substances located in the suspicious piece of luggage.